



Shepherds Gully and Devines Hill



2 hrs

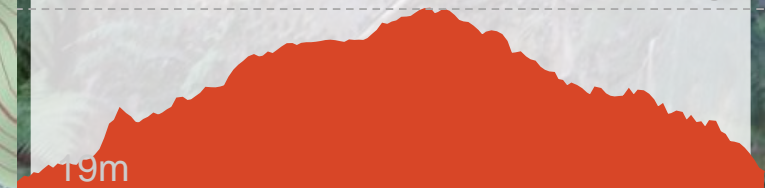
Moderate track

4 km One way

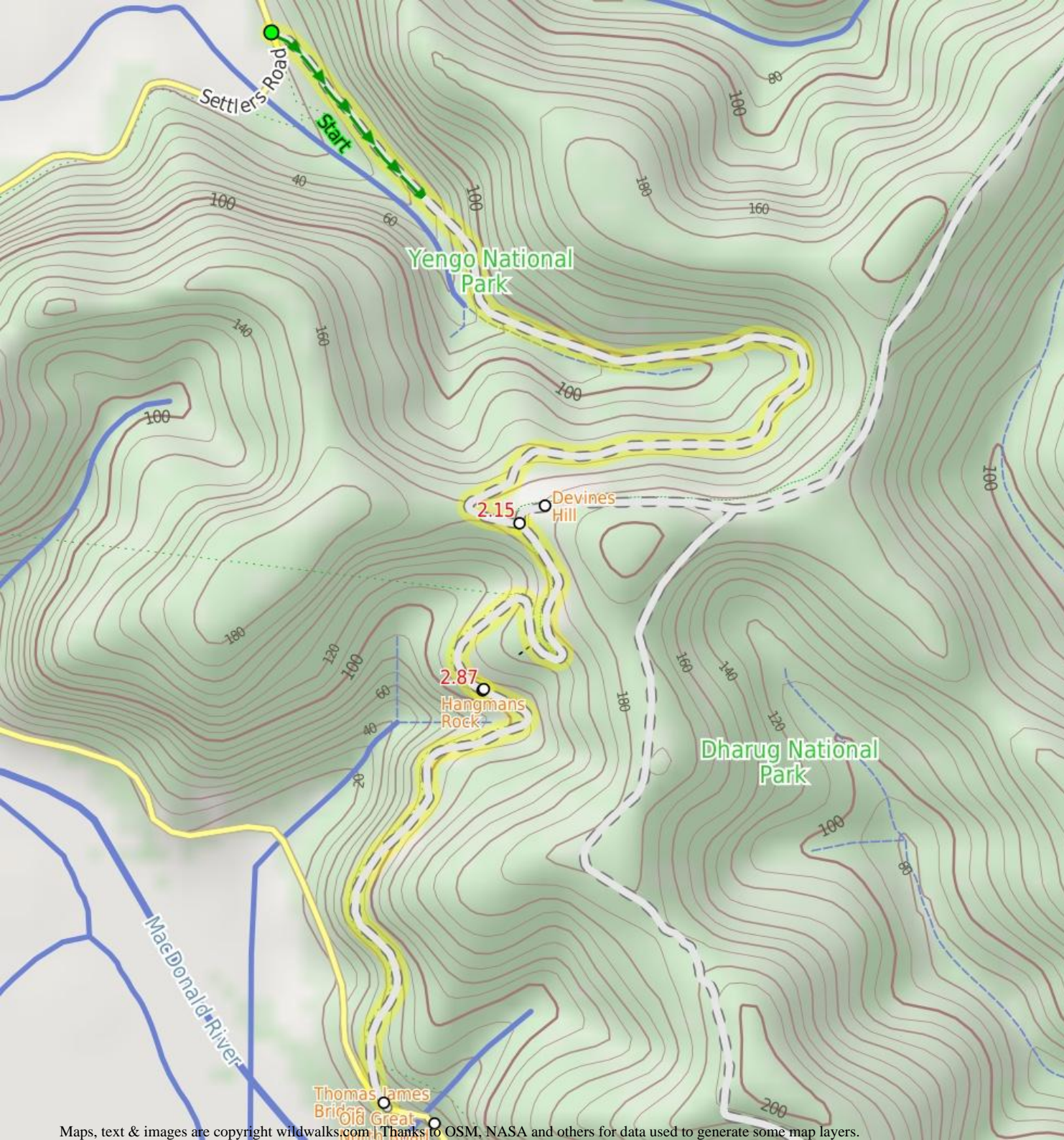
↑ 257m

3

A great one-way walk which offers some beautiful scenery in the moist and shaded parts of Shepherds Gully, some bigger views on Devines Hill and plenty of Old Great North Road history. There are plenty of information signs along the way giving some good background on the convict build roads, making the walking more interesting. A short walk along Wisemans Ferry Rd from the end of the walk will also get you to the Thomas James Bridge, the oldest in-use bridge on mainland Australia.



Yengo National Park



Are you ready to have fun?

Please ensure you and your group are well prepared and equipped for all possible hazards and delays. Check park closures, weather information and Fire Danger Rating before setting out. Optional side trips and alternate routes noted are not included in this walk's overall grade, length or time estimate. Please allow extra time for resting and exploring areas of interest. The authors, staff and owners of wildwalks take care in preparing this information but will not accept responsibility for any inconvenience, loss or injury you may experience. Please take care, have fun - Happy Walking.

Getting there You can get to Int of Settlers Rd and Shepherds Gully Rd (gps: -33.3557, 150.9827) by car or bus. Bus: Wisemans Ferry Dialacar provides a taxi style mini-bus service based in Wisemans Ferry. The cost is typically about \$1 per km (ex Wisemans Ferry). They will pick-up and drop-off from Sydney or the Central Coast and will happily drop walkers off or pick them up from tracks in the area. The cost for a pick-up from Gosford and drop off near Wisemans Ferry would be approximately \$150 (please call for up-to-date pricing) and the minivan can carry up to 13 passengers. Phone: 0448 122 374 Car: There is free parking available.

You can get back from Int of Wisemans Ferry Rd and OGNR (gps: -33.3752, 150.9849) by car or bus. Bus: Wisemans Ferry Dialacar provides a taxi style mini-bus service based in Wisemans Ferry. The cost is typically about \$1 per km (ex Wisemans Ferry). They will pick-up and drop-off from Sydney or the Central Coast and will happily drop walkers off or pick them up from tracks in the area. The cost for a pick-up near Wisemans Ferry and drop off at Gosford would be approximately \$150 (please call for up-to-date pricing) and the minivan can carry up to 13 passengers. Phone: 0448 122 374 Car: There is free parking available.

Find up to date and more information including: travel directions, weather, park closures and walker feedback at <http://wild.tl/sgadh>

0 | Wisemans Ferry

Wisemans Ferry village is on the banks of the Hawkesbury river, NSW. The town, and nearby car ferry, is named after Solomon Wiseman, a former convict who received a land grant in the area and established the ferry service. The town is a popular day trip and weekend destination from Sydney. There are several good spots to eat in town, including bistros at the Wisemans Ferry Inn and the Wisemans Ferry Bowling club, and takeaway food from Bush Bites cafe. The Riverbend Restaurant can be found in the 'Retreat at Wisemans' for finer dining. The area has some great walking and interesting history surrounding the convict built Old Great North Road. [More info.](#)

0 | Old Great North Road

The historic Great North Road was built using convict labour between 1826 and 1836 (this section south of Wollombi was completed in 1832). The road formed a link between Sydney and the Hunter Valley, including Newcastle. There are visible remnants of the original work in bridges, retaining walls and other structures along the way. The 'Convict Trail Project' has member groups involved in the conservation of historical remnants along the road. The Convict Trail Project and the NPWS have erected information signs at various points to illustrate the history. The Convict Trail Project has an excellent website for further reading. [More info.](#)

0 | Int of Settlers Rd and Shepherds Gully Rd

(2.1 km 47 mins) From the signposted track head on Settlers Rd, marked with a "Shepherd's Gully Road" Convict Trail signpost (about 9km from Wisemans Ferry crossing), the walk passes the 'Yengo National Park'

signpost and follows the management trail gently up the hill. After a short distance the walk passes an information sign and goes around a gate. The walk then continues to wind up along the valley for a long while, initially through very moist forest but getting drier as it climbs. Keep an eye out on the other side of the gully for remnants of the rock retaining walls of the earlier lines of the road. There are also some areas of beautiful scenery with lots of boulders, ferns and grass trees. The walk eventually arrives at a signposted intersection beside a gate.

2.15 | Devines Hill

Devines Hill is a historically significant area on the Old Great North Road, near present day Wisemans Ferry, NSW. There are substantial remnants visible here, including cuttings, retaining walls and quarry sites. There were 3 main road lines built at different times to climb the hills just north of Wisemans Ferry, starting with Finchs Line to the east, followed by the Devines Hill ascent and then Shepherds Gully, to the west. Information signs in the area provide some interesting historical background and the 'Convict Trail Project' has an excellent website for further reading. [More info.](#)

2.15 | Int of OGNR and Shepherds Gully Rd

(720 m 18 mins) Veer right: From the intersection, the walk passes around a gate and follows the management trail gently down the hill. This section of the walk zigzags a little, passing an information sign indicating the probable site of a stockade to hold the "more troublesome convicts", and continuing further to reach "Hangman's Rock".

2.87 | Hangmans Rock

Hangmans Rock is beside the historic Old Great North Road, near Wisemans Ferry, NSW. This beautiful sandstone cave/overhang has some steps and a bench seat cut into it and is part of the history of the convict built OGNR. It is uncertain what purpose the spot served, but stories that convicts were hanged through the hole in the roof of the cave appear unlikely to be true, despite giving a name to the atmospheric spot. [More info.](#)

2.87 | Hangmans Rock

(1.1 km 31 mins) Continue straight: From Hangman's Rock, the walk follows the old Great North Road gently down the hill. This section of the walk winds down the hill, passing numerous cuttings and retaining walls built with convict labour. There are several information signs on the way, making the walk more interesting. The walk then passes around a gate to arrive at the intersection with Wisemans Ferry Rd and car park (about 500m west of the car ferry).

3.95 | Thomas James Bridge

The historic Thomas James Bridge is on Wisemans Ferry Rd, NSW. This is the oldest in-use bridge on mainland Australia (Tasmania has older bridges) and is one of several convict built bridges along the Old Great North Road. The bridge was built during 1830 (the timber deck is more recent) and was named after the overseer of 'Road Party 25' which built the bridge. [More info.](#)

